

# SOCIAL BENEFIT REPORT

HLANGANISA SANDS (PTY) LTD

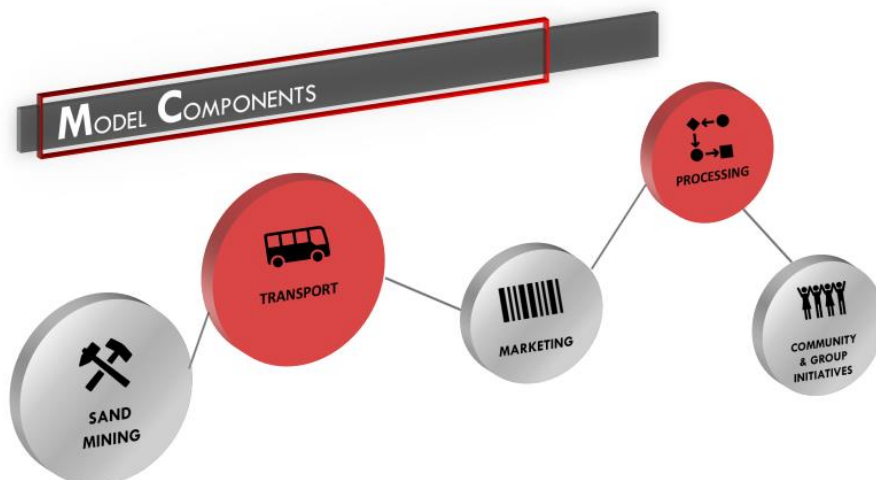


---

## PROJECT SUMMARY

---

The proposed project will co-operate and collaborate with the Traditional Council, local community members, schools, emerging farmers and contractors from the outset of the initiative. The operation aims to provide high quality building sand at a reasonable price to local people while creating jobs, assisting small businesses and encouraging development in the local community.



## **COLLABORATION WITH THE LOCAL COMMUNIITY**

---

We have developed a close relationship with the local community through years of operating community-based businesses in the area. We have been formally requested by both the Traditional Council and Saint Christopher's to assist with the development of the school and the general area.

## **PARTNERSHIPS**

---

### **SCHOOLS**

Currently the local schools cannot handle the large volume of students. We have had requests from multiple schools in the area to assist in upgrading their existing facilities.

We have been informed that requests have been formally lodged with the relevant municipality and the process is currently in motion.

## **BENEFIT FOR LOCAL SCHOOLS**

---

### **Facility Upgrade Assistance**

Hlanganisa Sands with the cooperation of Doornkop Sugar Estate Limited, have allocated land for the extension of the Saint Christopher's Primary School.

Currently the school is not able to service the demand of local scholars.

The upgrade has been formally lodged at the relevant municipality and has been accepted in the local development plan.

The need for larger facilities in local schools is a clear indication that the area requires development.

### **Building Assistance**

- Building expenses will be reduced for local community members
- Local contractors will have access to easily accessible raw materials

### **BENEFIT TO THE LOCAL COMMUNITY**

---

The proposed business will provide the following benefits to the local community and the contractors operating in the area:

#### **Job Creation**

The business will require many staff members which will be hired from the local community.

Jobs will be created in the following avenues:

- Agriculture
- Mining operation staff
- Administrative staff
- Security
- Local developments

## **Training and Skills Transfer**

Community members will receive training that will assist them with future job opportunities.

Small businesses and community members will benefit from being part of a larger business network

## **Building Supplies**

The operation will provide the local community with raw materials which will be used to upgrade school buildings.

Building sand can also be used in the local housing projects.

The cost of building for local community members will be reduced as they will have close access to building materials without the cost of transport.

## **Small Business Creation**

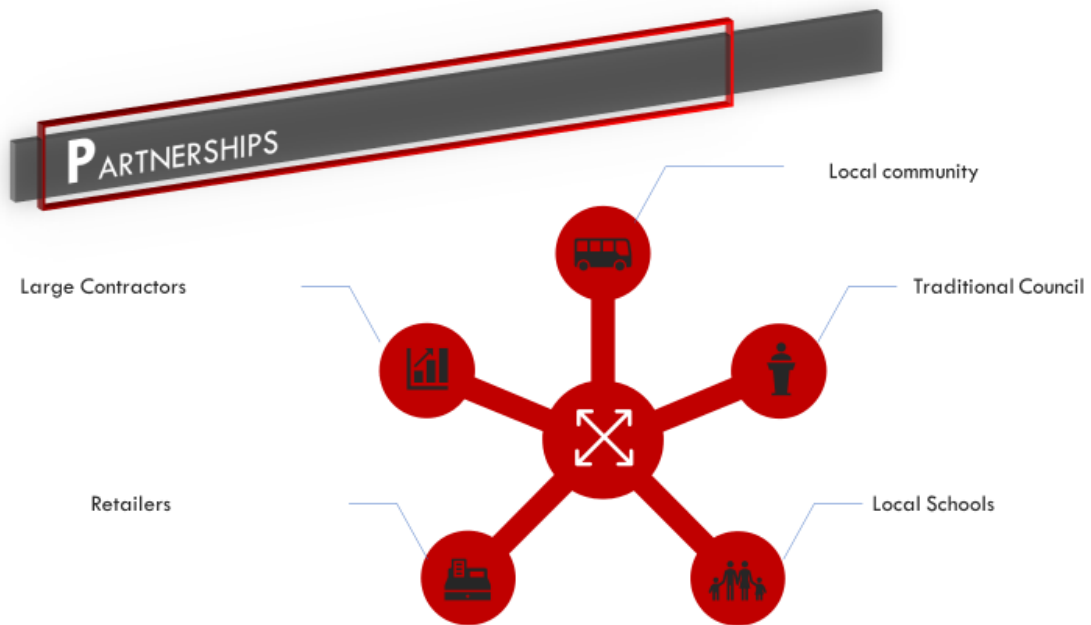
The proposed business will open the door to many opportunities for local small business owners and contractors.

## **Lack of sand in the area**

Currently building sand is in high demand by local construction and development companies, small contractors and builders as well as government and municipal projects.

# PARTNERSHIPS

---

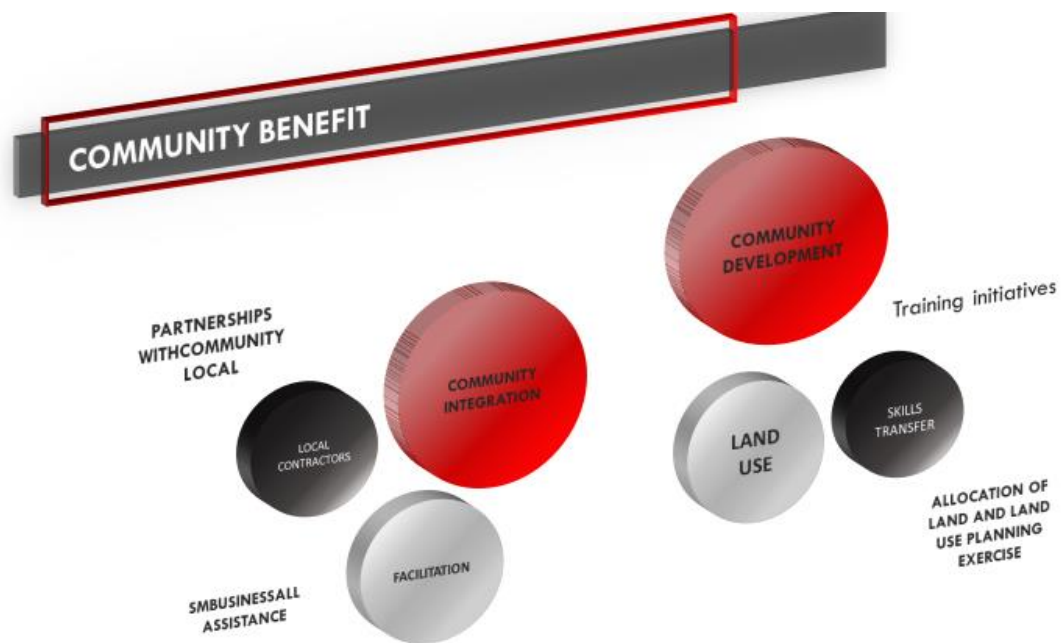


## LARGE GROWTH AND DEVELOPMENT IN THE AREA

---

the area has seen a high population growth in recent years. This has resulted in a higher unemployment rate and lack of opportunity for the local people.

The large growth in population has also created a higher demand for development in the area. There are many new businesses and developments starting in the general area, all of which will benefit from the project.



## MUNICIPAL STATISTICS

Source: <https://municipalities.co.za/demographic/1071/mandeni-local-municipality>

### Demographic Information

	2016	2011
<b>Population</b>		
	1 47 808	1 38 078
<b>Age Structure</b>		
Population under 15	32%	33.5%
Population 12 – 64	63.5%	62.6%
Population over 65	4.6%	3.9%
<b>Dependency Ratio</b>		
Per 100 (15-64)	57.6	59.7
<b>Population Growth</b>		
Per Annum	1.55%	1.25%

## PROJECT INSTIGATORS

---

The area has been affected by a drastic loss of job opportunities leaving local community members unemployed.

Many companies in the Isithebe Industrial Development have closed down leaving thousands of local people and their dependants without an income.

Sand winning rights will assist in creating new jobs in the Isithebe industrial area. This has resulted in marches and riots which have had further negative affect on the local economy.

A recent survey shows a reduction in the local work force in Isithebe alone from 40 000 workers to 20 000 in a matter of years.

Companies such as Metso have closed their doors which had a direct affect on three other local factories causing them to close down as well. Sappi workers have reduced their work hours significantly resulting in less income for the affected workers.

The sugar industry has recently seen large financial troubles resulting in the loss of thousands of jobs in the area. Farmers are looking to other crops and opportunities. We need to, as a community create opportunities for the people affected by these issues in recent years.

The area is in desperate need of development and assistance from both the local municipality as well as the private sector. A company like Hlanganisa Sands will create a variety of benefits for the community and will assist in creating a better future for local community members.

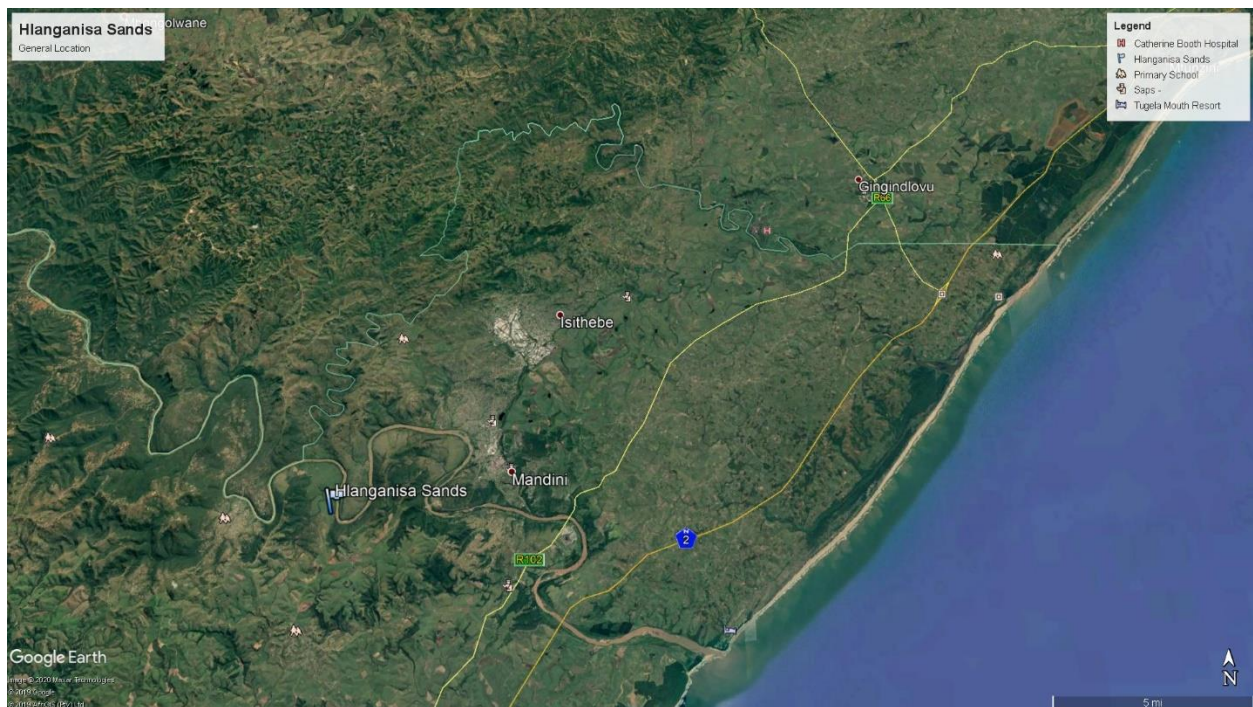


## SITE LOCATION AND MAP

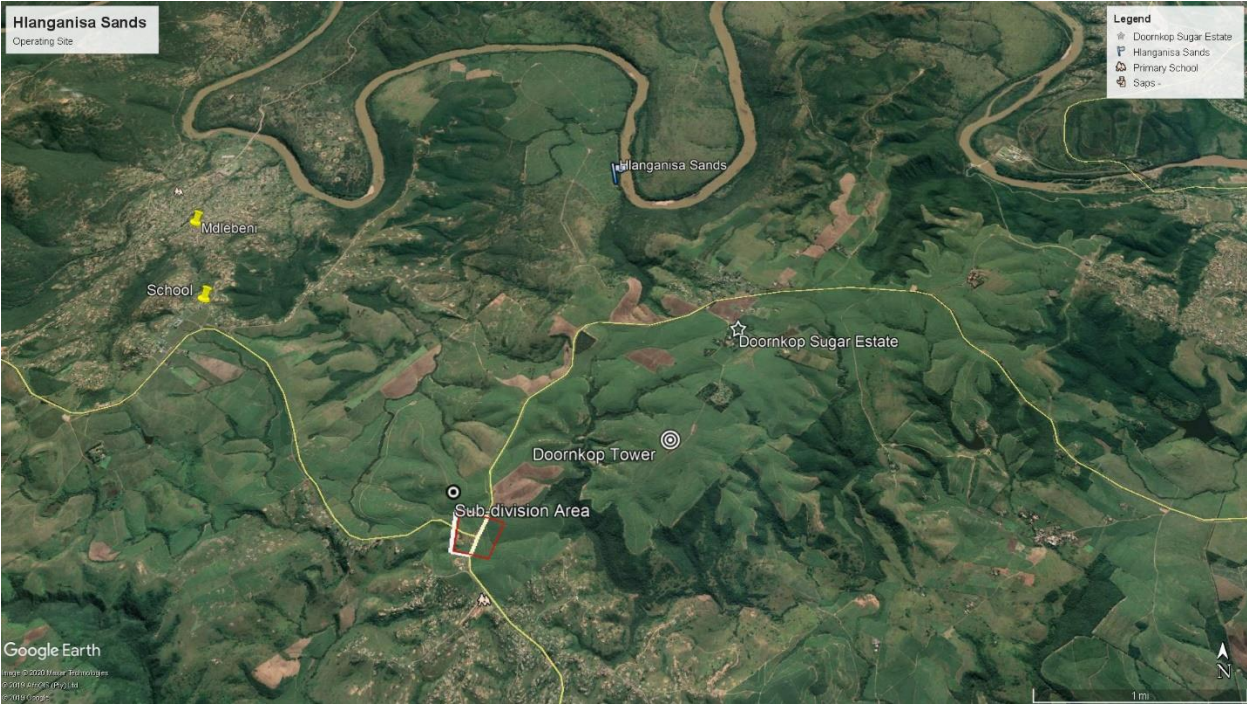
### CO-ORDINATES:

29°10'19.80"S

31°20'5.67"E



# AREA MAP



# EXTRACTION SITE

---

